

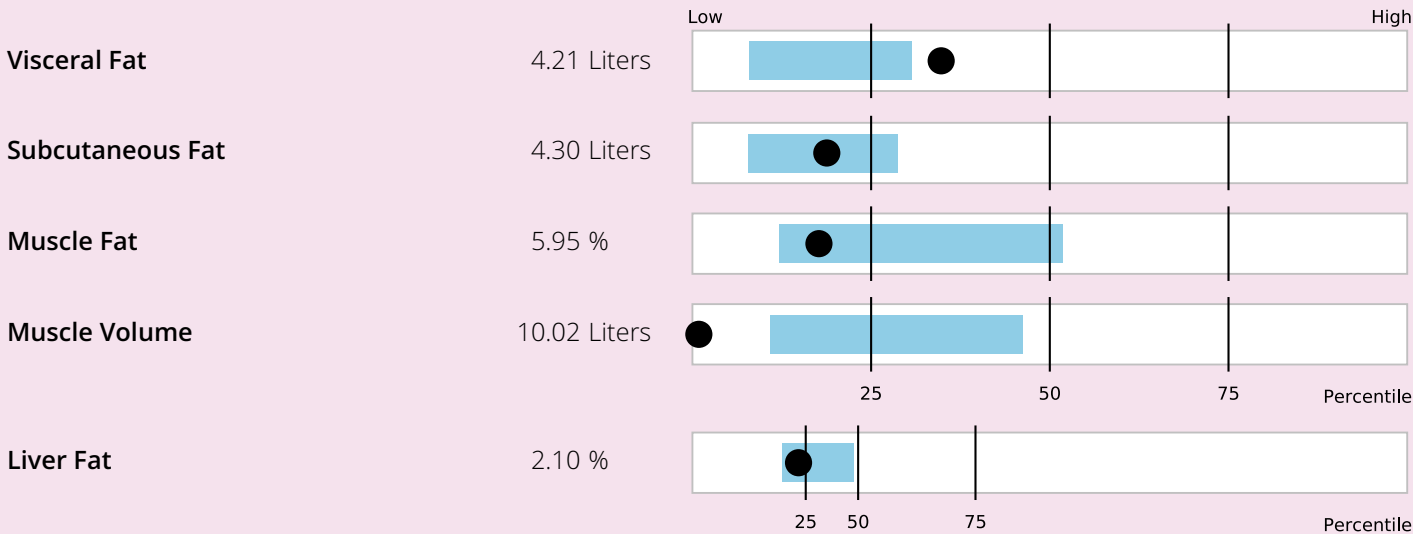
AMRA[®] BCP Scan Report

Patient Data

Name: Last, First
Patient ID: -
Acquisition Date: 2024-04-15
Sex: Male
Age: 58 years
DOB: 1966-01-01
Height: 1.85 m
Weight: 76.0 kg
BMI: 22.2 kg/m²

SAMPLE

Body Composition



Bar Legend
● Patient ■ Expected, given patient's sex and body size

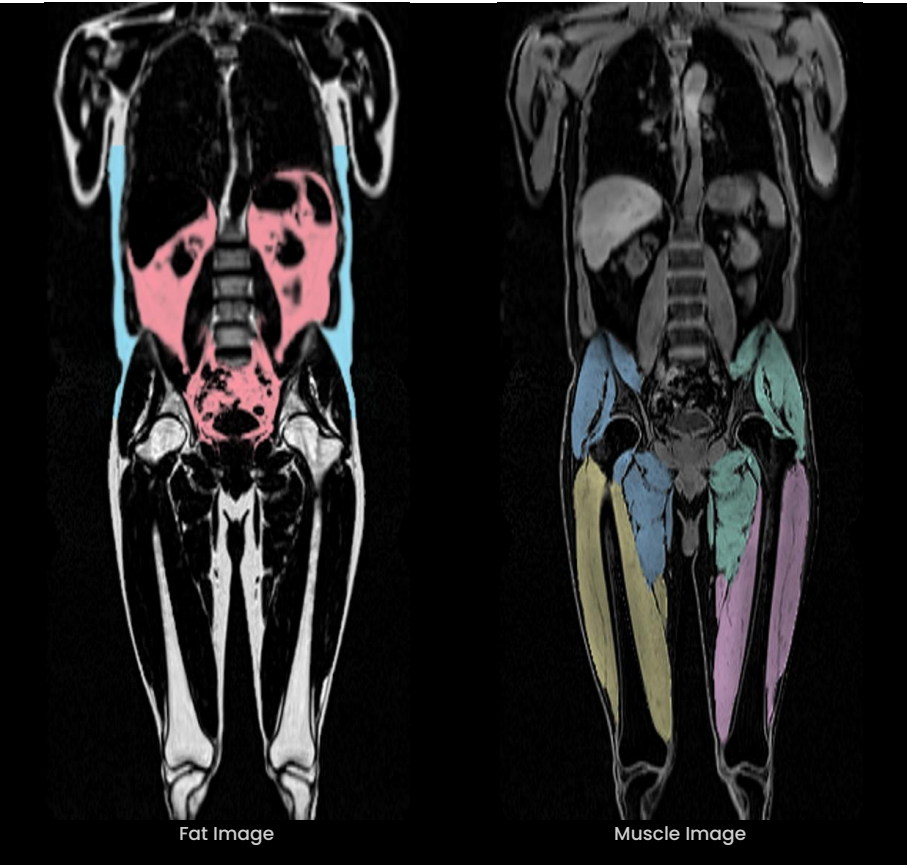


Image Legend

- Visceral Fat
- Subcutaneous Fat
- Left Anterior Thigh Muscle
- Right Anterior Thigh Muscle
- Left Posterior Thigh Muscle
- Right Posterior Thigh Muscle

How to read the AMRA[®] BCP Scan Report

This report is generated by AMRA[®] Profiler 4, which is a tool that measures thigh muscle composition and abdominal fat distribution using magnetic resonance imaging (MRI) data. The report provides patient specific Body Composition Profile (BCP) measurements; subcutaneous and visceral fat volume, muscle fat, muscle volume and liver fat. It also visualizes the patient's data in comparison to reference data, in order to enable assessment of the results in a relevant context.

Patient Data

Name: Last, First
Patient ID: -
DOB: 1966-01-01
Acquisition Date: 2024-04-15

Measurements and Bar Plots

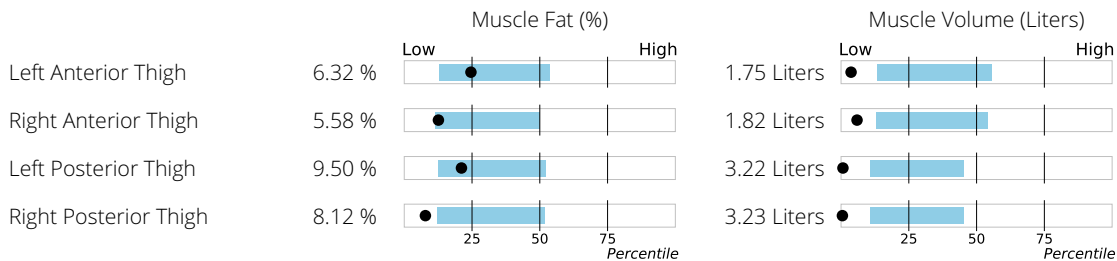
Each measurement is visualized in a bar plot, where the patient's location (black dot) is presented in relation to the distribution within a general sex-specific reference population. The bar also shows the expected range for the patient, given the patient's sex and body size (blue bar).

Image Quality Issues

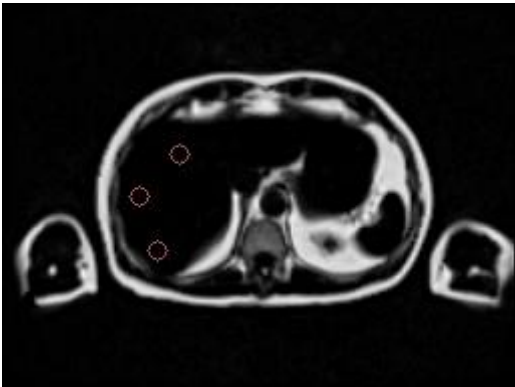
In rare cases, there can be one or more image quality issues present in the MRI data that is used as input to calculate one or more measurements presented in this report. As a consequence, the quality of the measurements cannot be guaranteed to be within the stated performance and the affected measurements are therefore not reported. In the event of an image quality issue in the MRI data, a short description of the identified issue will be presented.

Additional measurements and visualizations

Detailed Muscle Composition



Liver Image



Placement of a subset of ROIs used for calculation of Liver Fat

For more information on

- Underlying concepts and definitions
- Reference population used
- Performance specification
- Image quality issue categories

Go to:
amramedical.com/user-guides

Product Information

Generated by AMRA[®] Profiler 4,
version: 2024.4.552.
Reference population ID: 10.

AMRA[®] AMRA[®] Profiler 4 is an FDA
510(k) cleared (K211983) and CE
marked (NB 2862) medical device.

⚠ Caution: Clinical diagnosis should
not be based solely on results shown
in this report.



Badhusgatan 5 | 582 22 Linköping | Sweden
support@amramedical.com
www.amramedical.com